



Inner Temple Library Newsletter

Welcome to the Inner Temple Library's quarterly electronic newsletter. The newsletter aims to keep members and tenants of the Inner Temple up to date with news and developments in the Library.

All feedback is welcome and can be sent to librarynewsletter@innertemple.org.uk

Saturday Opening

One of the four Inn Libraries is open from 10.00 a.m. to 5.00 p.m. on each Saturday during the legal terms.

February	6 February	Lincoln's Inn
	13 February	Middle Temple
	20 February	Gray's Inn
	27 February	Inner Temple
March	6 March	Lincoln's Inn
	13 March	Middle Temple
	20 March	Gray's Inn
	27 March	Inner Temple
April	3 April	CLOSED
	10 April	Lincoln's Inn
	17 April	Middle Temple
	24 April	Gray's Inn

To view a Saturday Opening Timetable up to July 2010 click [here](#).

Training for Pupils

We are looking at ways of developing services to pupils. The Library team has a great deal of experience in legal research and we would willingly provide training for pupils on various aspects.

If you are interested in a training session, click [here](#) to complete a brief questionnaire, or contact tdennis@innertemple.org.uk.

Library Merger Proposals

CHEMS Consulting completed the feasibility study they were carrying out on behalf of the Executive Committees of the Inner Temple and the Middle Temple, and delivered their final report to the Inns in November. The options contained in the report, together with other structural and financial reports, were then considered by the relevant Committees of each Inn.

After the Committee discussions had taken place the Inner Temple's Sub-Treasurer, Patrick Maddams, issued the following statement, which was circulated to all members and tenants of the Inn and was publicised in the Library:

After lengthy deliberations, the Inner Temple and Middle Temple have concluded that none of the available options for a merger of their libraries and creation of an advocacy and education centre is sufficiently desirable to warrant further investigation and implementation. We have therefore agreed to bring to an end the negotiations which have been taking place under the aegis of the Joint Collaboration Committee.

We are aware of the great uncertainties these negotiations have caused to our library staffs and the Treasurers of both Inns would like to thank them for their professionalism and forbearance over the last nine months.

Library staff would like to thank the Library Committee, Library users and fellow librarians for their support throughout the feasibility study. We will be looking carefully at information gathered as part of the review to see whether any changes or additions to current services need to be made. We remain committed to providing a high quality Library service to meet the current and future research needs of our users with the resources available to us.



Inner Temple Library Newsletter

Inner Temple Library - Review of 2009

- ❖ [AccessToLaw](#) – our gateway site continues to be developed and now has annotated entries for over 1400 free legal sites in the UK, Europe and worldwide. New sections added to Legal Subject Areas include Company Law and Costs, and to the Commonwealth, Sierra Leone.
- ❖ Bar Librarians Group – the Librarian has organised and chaired meetings attended by representatives from the major publishers. Pricing of print and online subscriptions continues to be one of the most important topics for discussion.
- ❖ Binding – over 500 volumes of UK law and 150 volumes of Commonwealth law have been bound or rebound during the year.
- ❖ Cataloguing – around 200 new law titles and editions were added to the catalogue. To these must be added the many hundreds of serial volumes, both legal and non-legal. A major project aside from “everyday” cataloguing has been the recataloguing of the Caribbean law material housed in the Littleton basement.
- ❖ Conservation – we aim to ensure that unique items held by the Library, such as the Marshall Hall press cuttings, are conserved for future generations of researchers. Several volumes of cuttings relating to the legal and political career of Sir Edward Marshall Hall have now been rebound and conservation work has been carried out on the paper.
- ❖ [Current Awareness Weblog](#) – our selective current awareness service, covering new case law, changes in legislation and legal news, has been running for nearly two years. The number of subscribers has continued to increase and

now stands at 790. They include barristers, judges, solicitors, government department employees and law librarians. An article on the blog appeared in the *Internet Newsletter for Lawyers* and it featured in the e-book *the Legal Web 2009/10*.

- ❖ Displays – staff have created displays in the Library throughout the year, including one for Black History Month which featured the achievements of the first black and Asian members of the Bar. This attracted considerable interest from users.



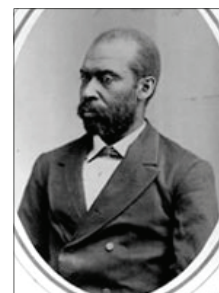
George James Christian
(1869-1940)



Mohandas Karamchand
Gandhi (1869-1948)



Cornelia Sorabji
(1866-1954)



Thomas Morris Chester
(1834-1892)

- ❖ Distance Service – 265 items have been supplied to members located in the UK and in the Bahamas, the British Virgin Islands, Cyprus, France, Gibraltar, Guernsey, and Jersey.



Inner Temple Library Newsletter

- ❖ Education and Training Activities – the Library was involved in several of the events organised by the Education and Training Department as part of their diversity project with the National Education Trust and state schools. For example in April we devised a set of legal research questions for the students to solve using print and online resources in the Library.



- ❖ Enquiries – staff at the Enquiry point dealt with 4,700 personal and telephone enquiries from barristers, pupils, students, clerks and researchers.
- ❖ [Facebook](#) – the latest Library news, plus details of new acquisitions and links to the latest issue of the electronic newsletter continue to be posted to the Library's Facebook page, which now has 400 fans.
- ❖ FAQs – a series of [FAQs on treaty research](#) was added to the existing [FAQs on UK and EU legal research](#) which are available on the Library's web site.
- ❖ Feasibility Study – Library staff assisted the consultants throughout the study, e.g. by creating and emailing a survey to members and tenants and publicising the results; measuring offices and Library rooms; and

producing and pricing lists of core publications and electronic services.

- ❖ Filming in the Library – the Library was used for various film and TV projects including the BBC documentary series on Gandhi.

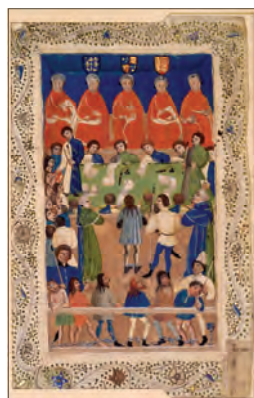


- ❖ Guides – the content of the Readers' Guide and Student Guide, plus guides to online services, has been regularly updated throughout the year.
- ❖ Historical Enquiries – we received email enquiries from all parts of the UK as well as from Ireland, Germany, France, Australia and the United States. Around a half of these related to persons supposed to have been members of the Inn. The remainder of the enquiries covered the widest range of subjects and included: the Inner Temple War Memorial; the seal of William Marshal, who is buried in the Temple Church; the Mitre Tavern; the collational formula of Edmund Spenser's *Works* of 1679; and the judgment of Bernard Levin on the (then) recently deceased Lord Goddard.
- ❖ IT Facilities – the PCs in the Gallery continue to be in demand, with over two thousand word processing sessions being booked throughout the year. The Wi-Fi access provided in rooms F and G continues to be popular.



Inner Temple Library Newsletter

- ❖ Manuscript Requests – there has been a steady flow of requests from researchers to view items from the manuscript collections. Subjects under investigation have included Salisbury episcopal charters, 1229 to 1297, the poetry of Thomas Nashe, letters from Sir Walter Raleigh, letters to Sir Philip Sidney, and handwriting and Latin usage in Ireland in the 15th and 16th centuries.



We have also received more requests than ever for permission to reproduce manuscripts in publications, the most requested items being the 15th-century illuminations featuring the four courts at Westminster. Requests have come from institutions as diverse as the Society of Genealogists, the Supreme Court of Queensland and the National Gallery.

- ❖ PCs – two more PCs have been installed in Room C, bringing the number of public access PCs to twenty-three. Our aim is to increase IT resources without losing the quiet studious atmosphere appreciated by users.
- ❖ Presentations – in September the Deputy Librarian gave two well attended presentations about the Inns of Court Libraries to BVC students at the City Law School. This presentation has been added to the web site. Click [here](#) to view.

- ❖ Student Events – the Library participated in the London and out of London students evenings, as well as organising tours for new students in September.
- ❖ Training – courses attended by Library staff included government information online, Northern Ireland law, abstracting, business writing, teaching legal research, and environmental monitoring, plus the annual Internet International conference and the BIALL conference.
- ❖ User Survey – this was carried out in June as part of the feasibility study and provided an interesting insight into how the Library is being used and the importance of having both hard copy and electronic resources. Click [here](#) to see the full results.
- ❖ Visits by British Library and government librarians – in November the Library was visited by groups of librarians from the British Library and various government departments. The aim of such visits is to strengthen links with other appropriate libraries and to draw attention to our important collections.
- ❖ Visit by the Prime Minister of Mauritius – in July the Hon. Dr Navinchandra Ramgoolam visited the Library and was instrumental in helping us to obtain the latest *Revised Laws of Mauritius*, thereby bringing our collection of Mauritius Laws up to date.
- ❖ Web Site – the content of the Library web site continues to be updated and expanded. We have recently added more slide shows and legal research FAQs, which are shown by the web statistics to be popular additions to the site.



Inner Temple Library Newsletter

Westlaw UK What's New in Case Law and Legislation

by the Westlaw UK Team

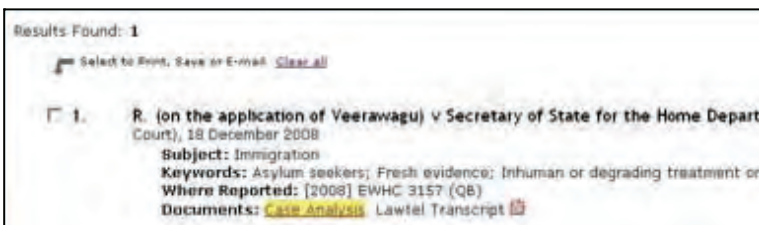
CASES

Additional content added in 2009:

- The English Reports – coverage from 1220
- W.Green's Reparation Reports from 1996
- W.Green's Family Reports from 1997
- W.Green's Housing Reports from 1997

Lawtel Cases On Westlaw UK

Subscribers to both Westlaw UK and its sister service, Lawtel, can now access Lawtel Next Day Transcripts and Official Transcript PDFs on Westlaw UK.



This will give you Lawtel's next day transcripts 3 to 4 weeks ahead of the release of the official transcript.

Coming in early 2010:

- Enhanced Case Analysis
- Graphical display of complex case histories

LEGISLATION

Prospective Law

From January 2010 you will be able to view consolidated **Prospective Law** on Westlaw UK.

This new enhancement will allow you to read provisions as they will look in the future without the need to cross-reference the amending provisions. Prospective versions will be available regardless of whether an in-force date has been appointed.

Providing a glimpse into the future, this valuable tool allows you to see how the law is due to change, when it is due to change, and what impact it may have on the way you work.

Prospective Law is included as part of the Westlaw UK subscription.

On launch, 1,500 consolidated versions of prospective law will be available to view for Acts from 2004 onwards. Key pre-2004 Acts will also have prospective versions available and the remaining will be applied on an ongoing basis.

Below you will find details of how to get the most out of Prospective Law on Westlaw UK.

New Status Icons

We have introduced a number of new legislation status icons. These will allow you to see the status of a provision instantly.

On launch, the icons below will display prominently next to search results, in the text of legislation, in the Arrangement of Provisions documents, in PDFs of Acts and SIs and in your alerts.

- Indicates the provision is a prospective version of the law
- Indicates the provision is not yet in force
- Indicates the provision is partially in force
- Indicates the provision is current law in force



Inner Temple Library Newsletter

These will supplement our existing icons, which you will continue to see as below.

- Indicates the provision has been superseded
- Indicates the provision has been repealed
- Indicates the provision has amendments pending

As usual, if you are not sure what an icon means, simply hover over it and an explanation will appear.

Table Of Amendments

We have also introduced a **Table of Amendments** to the Legislation Analysis document. Displaying the life story of a provision with all previous, current and future versions presented, it eliminates the need for cross-referencing.

Version	Provision	Amendment notes
5	Pt X s. 149(4)	words substituted by Pensions Act 2007 c. 22, Sch. 1(8)
4	Pt X s. 149(3)(b)	words repealed by Pensions Act 2007 c. 22, Sch. 7(2) pa
3	Pt X s. 149(2)(b)	words substituted by State Pension Credit Act 2002 c. 16 (1) para. 6(2)(b)
3	Pt X s. 149(2)(a)	words substituted by State Pension Credit Act 2002 c. 16 (1) para. 6(2)(a)
2	Pt X s. 149(4)	words substituted by Pensions Act 1995 c. 26, Sch. 4(1)
1		

You can clearly see status information, effective dates and amendment notes in one place.

Advanced Search Options

Within the Advanced Search section of Legislation, there will now be an option to include Prospective Law within your search.

Select

All versions including:

Law in Force

Historic Law

Prospective Law

Point in Time (dd/mm/yyyy)

Since (dd/mm/yyyy)

Auto: historic versions back to 1992
Etc: historic versions back to 1948

Under the **All versions including** option, simply tick the box next to **Prospective Law** and this will bring back all prospective versions of the provision of the Act or SI for which you are looking.

If you choose to search for a specific section of an Act or SI, you can bring back all versions – previous, current and prospective – so that you can view the one most relevant to the matter in hand.

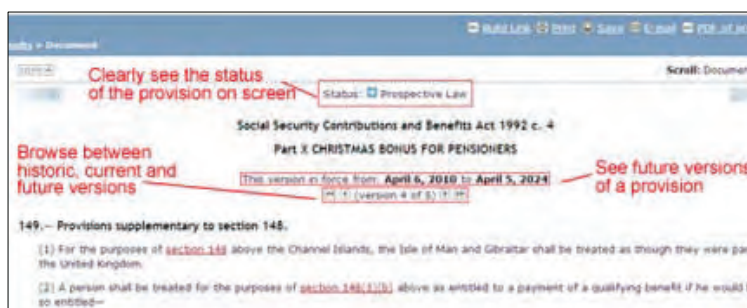
The results appear in reverse chronological order, with Prospective Law results at the top.

Browsing Different Version Of Legislation

As before, when looking at the text of legislation, you will be able to browse through the different versions of that provision. Now, you will be able to see how historic and future versions look.

Where a date has been appointed, there is also information of when the version will come into force.

You can easily tell the status of the provision by checking the icon at the top of the screen.



PDF Of Entire Act

When looking at the PDF of an Act, the provisions that are not yet in force, or that are partially in force, will also be included, ensuring that you have the most up-to-date version available.



Inner Temple Library Newsletter

These prospective sections are clearly indicated with the **N** and **P** status icons above them. Commencement dates, where available, are also included below the section.

Prospective Law Table

Within your **Legislation Overview Document**, you will be able to view all pending amendments for an entire Act or SI in one easy-to-read table.

Provision	Amendment notes	Effective date
Whole Document	repealed by Armed Forces Act 2006 c. 52 Pt 1 s. 4 s. 38(2)	November 8, 2010: repe 2007 but has been cont 2009/1752 subject to st
Pt 1 s. 39	word substituted by Serious Crime Act 2007 c. 27 Sch. 5 para. 10	date to be appointed: su but cannot take effect
Pt 1 s. 39(4)(9)	words substituted by Serious Crime Act 2007 c. 27 Sch. 5 para. 9	date to be appointed: su but cannot take effect
Pt 1 s. 40	substituted by Serious Crime Act 2007 c. 27 Sch. 5 para. 9	date to be appointed: su but cannot take effect
Pt 1 s. 40	substituted by Serious Crime Act 2007 c. 27 Sch. 5 para. 11	date to be appointed: su but cannot take effect

As well as listing all the provisions with pending amendments, the table also displays useful amendment notes and, where available, Commencement dates.

Consolidated Same Day Versions

You will now be able to see all same-day amendments rolled up into one version. Not only does this reduce the number of versions you need to read to see full amendment history, but it makes our new **Table of Amendments** even easier to read.

LINKS FROM LAWTEL

Customers who have access to both Westlaw UK and its sister service Lawtel can now link from a number of Lawtel documents to relevant documents on Westlaw UK. This new feature provides

seamless linking between Sweet & Maxwell's two online services allowing users to access all the research information quickly and easily.

Please note that you will only be able to view the Westlaw UK document if you have a subscription to both Westlaw UK and Lawtel.

Where available, you can link from the Lawtel Case Document to the Westlaw UK Case Analysis. You can also link from the Lawtel Statute screen through to the Westlaw UK Arrangement of Provisions and you can link from the Lawtel Statutory Instrument (SI) document to the Westlaw UK Arrangement of SI (c.40,000 Lawtel SI documents).

Where available, links from the Lawtel Articles Index document will be given to the full text article on Westlaw UK. Over 2,500 Lawtel documents link through to the Westlaw UK full text article.

For further information contact the Westlaw UK Customer Support Team Tel: 0800 028 2200; Email: customer.service@westlaw.co.uk

Current Awareness Weblog Survey

The [Current Awareness Weblog](#) has been running for nearly two years and the Library is currently carrying out a user survey to learn more about how the service is being used, with a view to making future improvements. Click [here](#) to complete the survey.

The weblog aims to provide up-to-date information on new case law, changes in legislation and legal news which may be of interest to UK lawyers and law students. The content is selected and updated daily by Library staff. Each item is tagged with subject terms so that users can view in a single list all the items on a given topic.



Inner Temple Library Newsletter

AccessToLaw: Intellectual Property

To increase coverage of specialist legal subject areas while minimising unnecessary duplication of stock, the four Inns of Court Libraries cooperate in a subject specialisation scheme. One of the areas that the Inner Temple Library has responsibility for is intellectual property law. The Library's AccessToLaw web site also has a section providing links to free [Intellectual Property](#) law information on the internet.

United Kingdom

The major United Kingdom government site linked to is the **Intellectual Property Office**. Formerly known as the Patent Office, it is responsible for intellectual property rights in the UK, and its web site has sections dealing with copyright, designs, patents and trade marks.

Two other sites relating to patents in the UK are the **British Library: Patents** site which includes general information about patents as well as information about the BL's holdings and services, and **GB Esp@cenet**, a database of UK patents and patent applications, produced by the European Patent Office.

The **Copyright Tribunal** web site includes information about the jurisdiction and procedures of the tribunal as well as a number of decisions, some of which are available for free download. The web site of the **Company Names Tribunal**, which deals with disputes about opportunistic company name and limited liability partnership name registrations, also includes downloadable decisions. Both sites are hosted by the Intellectual Property Office.

Nominet is a not-for-profit company which maintains the register of .uk internet domain names and operates a dispute resolution service. Its web site includes a database of decisions, as well as information about domain name case law.

Professional Bodies

The **Chartered Institute of Patent Attorneys** is the professional body for patent agents in the UK. As well as a register of patent agents, its web site includes a general overview of the law of intellectual property. The **Institute of Trade Mark Attorneys** is the equivalent body for trade mark attorneys and trade mark and design litigators. Along with the CIPA they have set up the **Intellectual Property Regulation Board** to regulate their professions, and the new single Code of Conduct is available on its web site.

Law firms and barristers' chambers

A number of law firms and barristers' chambers have web sites which include material relating to intellectual property. **IP/IT Update**, a web site produced by the specialist IP/IT chambers NIPC, includes articles, links, and case summaries. **RGC Jenkins & Co** and **Mewburn Ellis** are firms of trade mark attorneys, and design and trade mark specialists, with web sites which include a range of articles and related materials. **Lawdit Solicitors**, a firm specialising in intellectual property, also have a large article archive on their web site, while **Bird & Bird's** web site includes digests of selected intellectual property cases.

International

Intellectual property law has important international aspects. Among the important non-UK web sites listed on AccessToLaw are the **European Patent Office**, which provides a uniform application procedure for patents in thirty-eight European countries under the European Patent Convention; the **World International Property Organization**, a specialist UN agency which promotes protection of intellectual property worldwide; and UNESCO's **Collection of National Property Laws**, which provides a portal to copyright laws of member states. A number of other official, independent and academic sites are also listed.



Inner Temple Library Newsletter

Selected Resources on Intellectual Property available in the Library

Loose-leaf Publications

Patent Office
Manual of patent practice

Law Reports

Fleet Street Reports
Reports of Patent, Design and Trade Mark Cases

Journals

Intellectual Property Quarterly

Practitioners' Texts

- Akester, Patricia
Practical guide to digital copyright law (2008)
- Copinger, Walter A. & E.P. Skone James
Copinger and Skone James on copyright, 15th ed. (2005)
- Cornish, W.R.
Intellectual property, 6th ed. (2007)
- Kerly, Sir Duncan
Kerly's law of trade marks and trade names, 14th ed. (2005)
- Lang, Jon
Practical guide to mediation in intellectual property, technology and related disputes (2006)
- Lawrence, Clive
Brands: law, practice and precedents (2008)
- Modern law of patents* / eds A. Roughton, T. Cook, M. Spence (2005)
- Maniatis, Spyros
Trade marks in Europe, 2nd ed. (2010)
- Russell-Clarke, Alan D.
Russell-Clarke and Howe on industrial designs, 7th ed. (2005)
- Terrell, Thomas
Terrell on the law of patents, 16th ed. (2006)
- Tritton, Guy (et al.)
Intellectual property in Europe, 3rd ed. (2008)

New Staff

Rebecca
Ramsbottom
writes



In November I took over from Sarah Jones as Library Assistant. However, this is not my first experience of working for the Inns of Court, or indeed for the Inner Temple in particular. From 2007-2008 I was the graduate trainee at Lincoln's Inn Library, where I received a rigorous training in all aspects of legal research. At Lincoln's Inn I was also able to pursue my interest in rare books, as, like Inner Temple Library, it has an extensive historical collection. As an English Literature graduate I was particularly interested to find out that John Donne was both former member and Preacher at the Inn, and I was able to put together an exhibition of Donne-related material from the library and archives.

Last year I was studying at University College, London for my MA in Library and Information Studies (such a qualification is necessary for most professional library posts) and I worked part-time as an Evening Assistant at the Inner Temple Library. This proved a useful introduction to Inner's collections, making my induction in November smoother than it might have been otherwise. Having spent much of the summer undertaking research for my dissertation in a variety of London libraries, I am enjoying being back on the other side of the enquiry desk! I particularly enjoy working in a library where the provision of correct information is of such importance; where currency is crucial yet where the collections are also so historically significant.

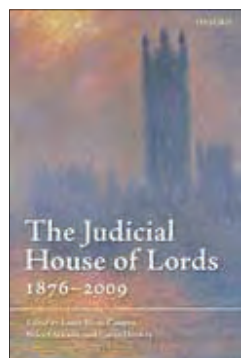


Inner Temple Library Newsletter

New Acquisitions

A number of the titles mentioned here relate to areas of law for which we are primarily responsible within the Inns of Court Libraries specialisation scheme. These include Canada, and, within English law, personal injuries and criminal law.

LexisNexis Canada stepped up production of the *Halsbury's laws of Canada* series towards the end of 2009. Volumes covering the following subjects (among others) have been received in the last month or so: Agriculture; ADR; Firearms; Fires; Children; Food; Gifts; Judges & courts; Prisons & prisoners; Police; Inquests; Public utilities.

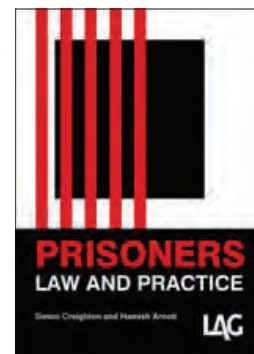


Published shortly before the new Supreme Court began its work, *The Judicial House of Lords 1876-2009*, a compendious retrospective volume edited by Louis Blom-Cooper, Brice Dickson and Gavin Drewry examines the origins of the House's judicial work, the different phases in the court's history, and

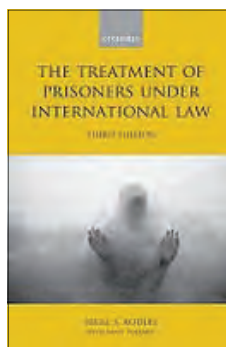
the reputation and influence of the House both in the UK and abroad. The book ends with a series of chapters in which experts in various areas of law discuss the important House of Lords cases in those areas.

Police misconduct, complaints and public regulation by John Beggs and Hugh Davies includes dedicated chapters on the complaints and discipline process (from recording the complaint through to the Police Appeals Tribunal); specific criminal offences (misconduct in public office, manslaughter); inquest proceedings; public inquiries; and judicial review. The content reflects the substantial developments in the law and practice since the implementation of the Police Reform Act 2002 in April 2004 and the reforms introduced by the Police (Conduct) Regulations 2008.

Simon Creighton and Hamish Arnott's *Prisoners: law and practice* (LAG) explores the state's duties towards those in detention and the nature of the rights that survive imprisonment. The authors take full account of the changes brought about by the Criminal Justice and Immigration Act 2008 and the new Parole Board Rules. In addition to detailed coverage of the general principles applicable to personal injury litigation, *Accidents abroad: international personal injury claims* by Bernard Doherty discusses the legal regimes governing, specifically, travel by air, sea, and rail, each with its own liability rules and limitation period.



New editions of established works include Briggs on *Civil jurisdiction and judgments*, Spencer Bower and Handley on *Res judicata*, Kennedy and Rose's *Law of salvage*, Hodgkinson and James on *Expert evidence*, Kerr and Hunter's *Receivers and administrators* and the collection of *Precedents for consent orders* published by Resolution (formerly the Solicitors Family Law Association).



We would like to thank the following members of the Inn who have kindly presented works to the Library: Master McGregor for *McGregor on damages*, 18th edition; John Wilson for *Cohabitation: law, practice and procedure*; Stephen Cottle for *Housing law handbook: a practical guide*; Master Stephen

Bickford-Smith for *Party walls: law and practice*, 3rd edition; Master Sedley for *Treatment of prisoners under international law*, 3rd edition by Sir Nigel Rodley, and Master Bowley for his autobiographical volume *Friends and families*.